



reventon

2022

CATALOGUE

 ENG



Reventon Group Sp. z o.o. (Ltd.)
Wyzwolenia 556 Street, 43-340 Kozy
NIP 937-267-50-06
E: biuro@reventongroup.eu
T: +48 33 482 74 96
www.reventongroup.eu

TABLE OF CONTENTS

ABOUT US	4-5
INDUSTRIAL SOLUTIONS	
AIR WATER HEATERS IN EPP CASING SERIES HC-3S 230V	6-8
SETS OF AIR WATER HEATERS SERIES HC-3S 230V	9
AIR WATER HEATERS IN EPP CASING SERIES HC-EC 230V	10
AIR WATER HEATERS IN EPP CASING SERIES HC3P 400V	11
AIR WATER HEATERS IN EPP CASING SERIES FARMER HCF 230V	12-13
AIR WATER HEATERS SERIES FARMER OPENAIR 230V	14
AIR WATER HEATERS WITH STEEL CASING SERIES S-3S 230V	15
MIXING CHAMBERS SERIES MC	16
WATER AIR CURTAINS SERIES AERIS WN-1P 230V	17-18
COLD AIR CURTAINS SERIES AERIS C-1P 230V	19
ELECTRIC AIR CURTAINS SINGLE-PHASE SERIES AERIS E-1P 230V	20
ELECTRIC AIR CURTAINS SINGLE-PHASE SERIES AERIS EN-1P 230V	21
ELECTRIC AIR CURTAINS THREE-PHASE SERIES AERIS EN-3P 400V	22
GATE CURTAINS SERIES HUMMER 230V	23
DESTRATIFICATOR SERIES HC-3S 230V	24-25
DESTRATIFICATOR SERIES TORNADO 230V	26
AXIAL FANS WITH PROTECTIVE GRILLE SERIES FR-BG 230V/400V	27-28
AXIAL FANS WITH SUCTION PROTECTION GRID SERIES FR-SG 230V/400V	28
AXIAL FANS IN SQUARE HOUSING SERIES FR-BS 230V/400V	29
AXIAL FANS IN A ROUND HOUSING FR-BC 230V	29
DUCT FANS SERIES FR-DF 230V	30
ROOF FANS SERIES STORM 230V	31
CONTROLLERS AND ACCESSORIES	32-34
HOME APPLIANCES	
HOW HEAT RECOVERY WORKS	35-37
HEAT RECOVERY UNITS SERIES INSPIRO BASIC	38
HEAT RECOVERY UNITS SERIES INSPIRO	39
DOMESTIC FANS SERIES VELO	40-41
DOMESTIC FANS SERIES CODE	42
DOMESTIC FANS SERIES REGO	43
PRODUCTION	44
REALIZATIONS	45-46

Who are we?

Reventon is a rapidly growing brand that has been working hard for its success since 2015. Thanks to the professional approach to customer needs, it permanently marks its presence on other global markets. Our headquarters is located in Poland, which does not stop us from successfully exporting our devices all over the world. All this thanks to experience, efficient communication and the work of many people, so that our products arrive on time wherever they are needed.



people

People are the strength of our brand, because they work on its development every day. Each member of our team knows well that his work matters and it is on him that the success of the daily mission of delivering the highest quality product to the end customer depends on him.

development

The interest in our products has allowed us to appear on over 30 global markets. Therefore, our clients inform us about the various functionalities they expect. It is an incentive for us to develop and improve subsequent devices on which we are working.

technology

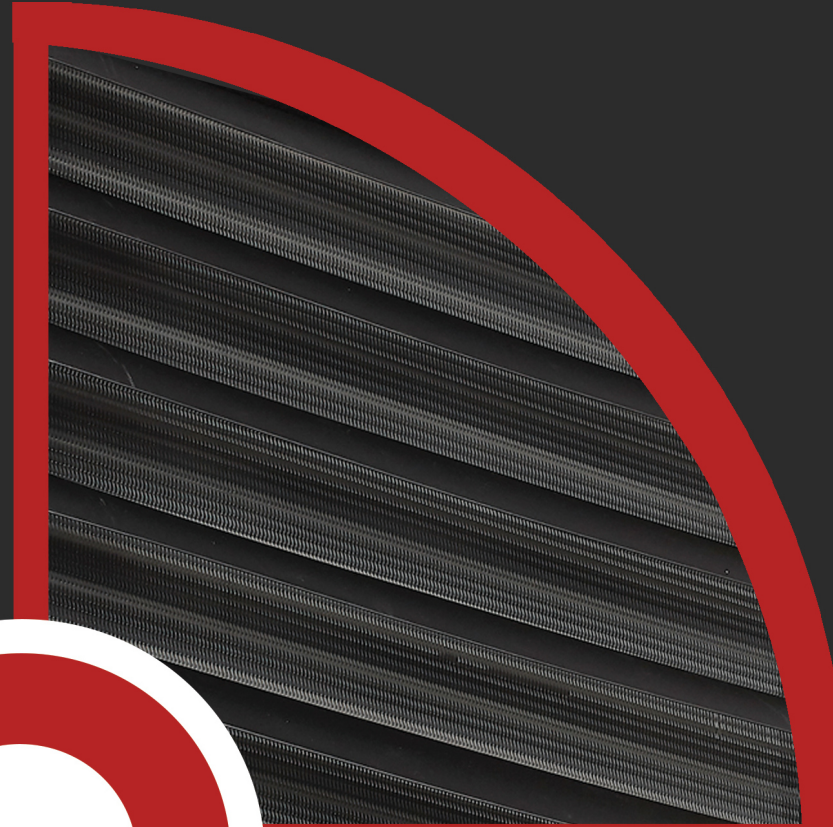
Each of our products begins in our design department. This is where our engineers work to create a product that will meet the expectations of our customers. Their experience and attention to product development mean that they do not stop for a moment in their pursuit of perfection of their search for new solutions that gain recognition among our partners and end customers.

design

The appearance of our products is due to the designers cooperating with us. They make sure that our devices can satisfy even the greatest aesthetes with their appearance. After all, they know that the best quality tester is a demanding customer. It is thanks to the dialogue with customers that we are able to successfully create devices that are original enough to delight and useful enough to fit into any interior.

AIR WATER HEATERS

IN EPP CASING



- environmentally friendly durable EPP casing,
- quiet and reliable operation,
- modern design,
- easy to assemble.

HC series

Water heaters are a wide range of heaters in our offer, which enables the appropriate selection of the device to the requirements of a given facility, thanks to the different heating power, efficiency and range. This is one of the most popular devices used for heating large-scale surfaces. Their decisive advantage is high work efficiency and relatively low investment costs.

Air water heater series **HC-3S 230V**

The HC-3S series water heater is designed for industrial facilities with a central heating installation. The device is equipped with an EPP casing (so-called expanded polypropylene), which makes it perfect for even difficult environmental conditions, e.g. in places with high humidity. An additional advantage of the EPP housing is the suppression of sounds resulting from the operation of the device, thus ensuring its quiet operation.

Place to use:

The HC-3S series air water heaters will successfully provide thermal comfort in such places as:

- production halls,
- storage rooms,
- commercial pavilions,
- car repair shops,
- garages,
- greenhouses.



Device features:

- quiet and reliable operation,
- environmentally friendly and durable EPP casing,
- 3 speed fan motor,
- easy to assemble,
- modern design,
- automation dedicated to the device.



AVAILABLE VARIANTS

AIR WATER HEATER WITH 360° DIFFUSER



A specially designed overlay allows the air to flow in the range of 360 degrees - it makes the air rotate, and thus ensures its better mixing.

AIR WATER HEATER WITH CONFUSER



The use of a confuser increases the air outlet velocity and, consequently, the range of the heater.

	UNIT	HC20-3S	HC30-3S	HC35-3S	HC45-3S	HC50-3S	HC70-3S	HC80-3S
PRODUCT CODE		WHHC20-3S-1759	WHHC30-3S-1760	WHHC35-3S-1761	WHHC45-3S-1762	WHHC50-3S-2006	WHHC70-3S-1764	WHHC80-3S-1956
NOMINAL HEATING CAPACITY	kW* 3 stage/ 2 stage/ 1stage	21,4 17,3 13,3	26,4 20,3 15,5	30,3 22,9 17,3	42,0 28,9 21,1	49,8 45,2 34,6	60,6 40,1 32,7	69,2 61,5 46,5
HEATING CAPACITIES RANGE	kW**	1,55 – 28,4	1,8 – 34,9	2,14 – 40,1	3,21 – 55,6	5,00 – 65,8	5,0 – 80,1	6,96 – 91,5
MAXIMUM AIRFLOW	m ³ /h 3 stage/ 2 stage/ 1stage	3200 2150 1350	3100 1950 1250	2700 1700 1100	2500 1450 950	5000 4200 2600	3400 1900 1450	4200 3500 2300
MAXIMUM ISOTHERMAL STREAM RANGE	m	19	18	15	14	24	18	21
NUMBER OF ROWS	pcs.	1	1	2	2	2	3	3
WATER CAPACITY	dm ³	0,65	0,8	1,35	1,7	1,95	2,85	2,85
MAXIMUM TEMPERATURE OF HEATING FLUID	°C	120	120	120	120	120	120	120
MAXIMUM PRESSURE OF HEATING FLUID	MPa	1,6	1,6	1,6	1,6	1,6	1,6	1,6
CONNECTORS DIAMETER	cal	3/4	3/4	3/4	3/4	3/4	3/4	3/4
VOLTAGE / FREQUENCY	V/ Hz	230/50	230/50	230/50	230/50	230/50	230/50	230/50
NOMINAL MOTOR CURRENT	A 3 stage/ 2 stage/ 1stage	0,84 0,65 0,54	0,84 0,65 0,54	0,84 0,65 0,54	0,84 0,65 0,54	2,20 1,70 1,50	1,08 0,86 0,70	2,20 1,70 1,50
NOMINAL MOTOR SPEED	rpm 3 stage/ 2 stage/ 1stage	1400 1050 750	1400 1050 750	1400 1050 750	1400 1050 750	1350 1200 750	1360 1050 750	1350 1200 750
NOMINAL MOTOR POWER	W 3 stage/ 2 stage/ 1stage	190 150 120	190 150 120	190 150 120	190 150 120	480 350 280	240 190 160	480 350 280
IP PROTECTION RATING OF MOTOR	-	54	54	54	54	54	54	54
NET WEIGHT	kg	11,5	12	12,5	14	20,5	19,5	22,5
NOISE	dB*** 3 stage/ 2 stage/ 1stage	55 49 47	55 49 47	54 48 46	54 48 46	62 57 51	58 53 49	61 56 51

* for the parameters 90/70 °C and the inlet air temperature 0 °C

** the max. capacity for 120/90 °C, 0 °C the inlet air temperature, 3rd stage // the min. capacity for 40/30 °C, 20 °C the inlet air temperature, 1st stage

*** the measurement at the distance of 5 m from the device



Full technical documentation is available on our website.

www.reventongroup.eu



SETS

AIR WATER HEATERS series HC

HC MINI SET



+



Air water heater HC
(HC20-3S, HC30-3S, HC35-3S, HC45-3S,
HC50-3S, HC70-3S, HC80-3S)

Rotary console

HC STANDARD SET



+



+



Air water heater HC
(HC20-3S, HC30-3S, HC35-3S, HC45-3S,
HC50-3S, HC70-3S, HC80-3S)

Rotary console

3-stage speed controller with
HC3S thermostat

HC PRESTIGE SET



+



+



Air water heater HC
(HC20-3S, HC30-3S, HC35-3S, HC45-3S,
HC50-3S, HC70-3S, HC80-3S)

Rotary console

HMI programmable controller

Air water heater series **HC-EC 230V**

The HC-EC series water heater is intended for industrial facilities with a distributed central heating system. This device has an axial forcing fan, equipped with a brushless EC motor, which is characterized by high energy efficiency and a wide range of rotational speed regulation. The heater also has an EPP casing (so-called expanded polypropylene), which makes it perfect for even difficult working conditions, e.g. in places with high humidity. The use of this type of housing ensures quiet operation of the device.



Place to use:

The HC-EC series water heater is used for heating objects such as:

- logistics centers,
- storage rooms,
- commercial pavilions,
- production halls,
- garages / car repair shops.



Device features:

- fan with EC motor with smooth regulation,
- environmentally friendly durable EPP housing,
- quiet and reliable operation of the device,
- easy to assemble,
- high energy efficiency of the device.



	UNIT	HC 20-EC	HC 30-EC	HC 35-EC	HC 45-EC	HC 50-EC	HC 70-EC
PRODUCT CODE		WHHC20-EC-1985	WHHC30-EC-1986	WHHC35-EC-1987	WHHC45-EC-1988	WHHC50-EC-1989	WHHC70-EC-1990
NOMINAL HEATING CAPACITY	kW*	24,7	30,4	36,0	50,5	48,6	67,2
HEATING CAPACITIES RANGE	kW**	1,91 – 32,7	2,28 - 40,3	2,80 - 47,6	4,54 - 66,7	4,36 - 64,1	5,93 - 88,9
MAXIMUM AIRFLOW	m³/h	4300	4100	3700	3400	4800	4000
MAXIMUM ISOTHERMAL STREAM RANGE	m	21	20,5	19,5	19	23	20
NUMBER OF ROWS	pcs.	1	1	2	2	2	3
WATER CAPACITY	dm³	0,65	0,8	1,35	1,7	1,95	2,85
MAXIMUM TEMPERATURE OF HEATING FLUID	°C	120	120	120	120	120	120
MAXIMUM PRESSURE OF HEATING FLUID	MPa	1,6	1,6	1,6	1,6	1,6	1,6
CONNECTORS DIAMETER	cal	3/4	3/4	3/4	3/4	3/4	3/4
VOLTAGE / FREQUENCY	V/Hz	230/50	230/50	230/50	230/50	230/50	230/50
NOMINAL MOTOR CURRENT	A	1,5	1,5	1,5	1,5	2,0	2,0
NOMINAL MOTOR SPEED	rpm	1600	1600	1600	1600	1590	1590
NOMINAL MOTOR POWER	W	315	315	315	315	420	420
IP PROTECTION RATING OF MOTOR	-	44	44	44	44	44	44
NET WEIGHT	kg	13,5	14	14,5	16	18	20
NOISE	dB***	60	59	58	58	59	58

* for the parameters 90/70 °C and the inlet air temperature 0 °C

** the max. capacity for 120/90 °C, 0 °C the inlet air temperature, 100% airflow // the min. capacity for 40/30 °C, 20 °C the inlet air temperature, 50% airflow

*** the measurement at the distance of 5 m from the device

Air water heater series **HC3P 400V**

The HC3P series water heater is intended for installation in buildings equipped with a three-phase installation. The device combined with accessories dedicated to it, creates a complete heat distribution system. This solution not only provides an effective way to achieve thermal comfort, but also allows the device to operate economically.



Place to use:

The HC3P series water heater is designed for large-volume rooms such as:

- warehouses,
- halls,
- logistics centers,
- commercial pavilions,
- production lines,
- car repair shops.



Device features:

- 1-speed three-phase fan,
- quiet and reliable operation,
- environmentally friendly durable EPP housing,
- easy to assemble,
- modern design.



	UNIT	HC3P 20	HC3P 30	HC3P 35	HC3P 45	HC3P 50	HC3P 70
PRODUCT CODE		WHHC3P20-1514	WHHC3P30-1626	WHHC3P35-1515	WHHC3P45-1627	WHHC3P50-1516	WHHC3P70-1517
NOMINAL HEATING CAPACITY	kW*	21,4	26,4	30,3	42,0	44,3	60,6
HEATING CAPACITIES RANGE	kW**	2,36 – 28,4	2,84 – 34,9	3,51 – 40,1	6,02 – 55,6	6,23 – 58,5	8,78 – 80,1
MAXIMUM AIRFLOW	m ³ /h	3200	3100	2700	2500	4000	3400
MAXIMUM ISOTHERMAL STREAM RANGE	m	19	18	15	14	21	18
NUMBER OF ROWS	pcs.	1	1	2	2	2	3
WATER CAPACITY	dm ³	0,65	0,8	1,35	1,7	1,95	2,85
MAXIMUM TEMPERATURE OF HEATING FLUID	°C	120	120	120	120	120	120
MAXIMUM PRESSURE OF HEATING FLUID	MPa	1,6	1,6	1,6	1,6	1,6	1,6
CONNECTORS DIAMETER	cal	3/4	3/4	3/4	3/4	3/4	3/4
VOLTAGE / FREQUENCY	V/Hz	400/50	400/50	400/50	400/50	400/50	400/50
NOMINAL MOTOR CURRENT	A	0,47	0,47	0,47	0,47	0,60	0,60
NOMINAL MOTOR SPEED	rpm	1400	1400	1400	1400	1360	1360
NOMINAL MOTOR POWER	W	190	190	190	190	240	240
IP PROTECTION RATING OF MOTOR	-	54	54	54	54	54	54
NET WEIGHT	kg	11,5	12	12,5	14	17,5	19,5
NOISE	dB***	55	55	54	54	59	58

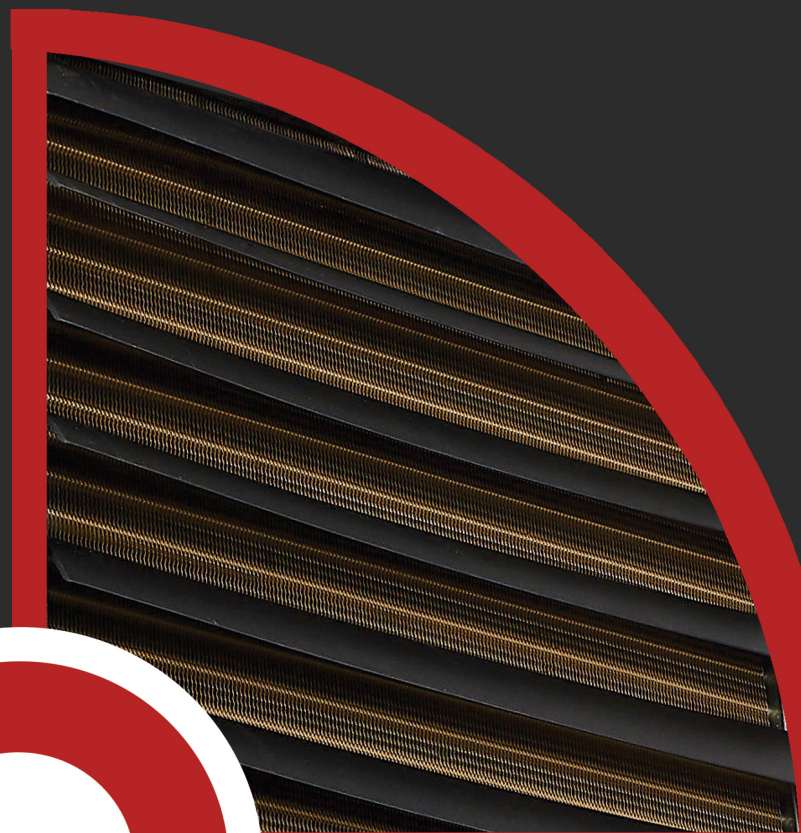
* for the parameters 90/70 °C and the inlet air temperature 0 °C

** the max. capacity for 120/90 °C, 0 °C the inlet air temperature // the min. capacity for 40/30 °C, 20 °C the inlet air temperature

*** the measurement at the distance of 5 m from the device

AIR WATER HEATERS

IN EPP CASING



- adapted to work in aggressive conditions,
- easy maintenance of the device,
- equipped with a special anti-corrosion coating,

FARMER

The Farmer series water heaters are high-class devices that are designed to work in facilities with an increased level of dust or moisture. This device distinguishes itself from other solutions of this type with the ability to work in extremely difficult and aggressive conditions, appropriate for this type of room. Due to the high content of acids, ammonia and the high concentration of dust and moisture, we used the GOLD EPOXY coating, which protects the heat exchanger.

Air water heater series **FARMER HCF 230V**



Place to use:

The Farmer series water heater is designed for agrarian spaces such as:

- greenhouses,
- pigsties,
- chicken coops,
- granaries,
- stables.



Device features:

Thanks to the GOLD EPOXY coating method, the Farmer HCF series water heater has an antibacterial coating:

- longer life of the exchanger in an aggressive environment,
- antibacterial protection preventing the growth of bacteria inside the exchanger,
- protection against mold,
- anti-corrosion effect,
- water resistance.
- The Farmer HCF IP66 device is equipped with a fan with a higher degree of IP protection.



	UNIT	FARMER HCF IP54-3S			FARMER HCF IP66		
PRODUCT CODE		WHHCF47-3S-1765			WHHCF53-1527		
NOMINAL HEATING CAPACITY	kW*	44,3	32,5	26,5	50,2	-	-
HEATING CAPACITIES RANGE	kW	3,87 – 58,5 **			7,01 – 66,2 ***		
MAXIMUM AIRFLOW	m³/h	4000	2400	1750	5000	-	-
MAXIMUM ISOTHERMAL STREAM RANGE	m	21			24		
NUMBER OF ROWS	pcs.	2			2		
WATER CAPACITY	dm³	1,95			1,95		
MAXIMUM TEMPERATURE OF HEATING FLUID	°C	120			120		
MAXIMUM PRESSURE OF HEATING FLUID	MPa	1,6			1,6		
CONNECTORS DIAMETER	cal	3/4			3/4		
VOLTAGE / FREQUENCY	V/Hz	230/50			230/50		
NOMINAL MOTOR CURRENT	A 3 stage/ 2 stage/ 1stage	1,08	0,86	0,70	2,7	-	-
NOMINAL MOTOR SPEED	rpm 3 stage/ 2 stage/ 1stage	1360	1050	750	1335	-	-
NOMINAL MOTOR POWER	W 3 stage/ 2 stage/ 1stage	240	190	160	610	-	-
IP PROTECTION RATING OF MOTOR	-	54			66		
NET WEIGHT	kg	17,5			20		
NOISE	dB*** 3 stage/ 2 stage/ 1stage	59	54	50	63	-	-

* for the parameters 90/70 °C and the inlet air temperature 0 °C

** the max. capacity for 120/90 °C, 0 °C the inlet air temperature, 3rd stage // the min. capacity for 40/30 °C, 20 °C the inlet air temperature, 1st stage

*** the max. capacity for 120/90 °C, 0 °C the inlet air temperature // the min. capacity for 40/30 °C, 20 °C the inlet air temperature

**** the measurement at the distance of 5 m from the device

Air water heater series

FARMER OpenAir 230V



Place to use:

The Farmer OpenAir series water heater is designed to work in an aggressive environment such as:

- car washes,
- stables,
- greenhouses,
- pigsties,
- chicken coops.



Device features:

- has a special GOLD EPOXY coating,
- fan with increased IP degree,
- equipped with a fully opening housing, allowing easy access to the device for maintenance,
- adapted to many different mounting solutions.



	UNIT	FARMER OPENAIR IP66
PRODUCT CODE		WHHCFO-2042
NOMINAL HEATING CAPACITY	kW*	54,3
HEATING CAPACITIES RANGE	kW**	7,5 - 71,6
MAXIMUM AIRFLOW	m³/h	5100
MAXIMUM ISOTHERMAL STREAM RANGE	m	25
NUMBER OF ROWS	pcs.	3
WATER CAPACITY	dm³	3,8
MAXIMUM TEMPERATURE OF HEATING FLUID	°C	120
MAXIMUM PRESSURE OF HEATING FLUID	MPa	1,6
CONNECTORS DIAMETER	cal	3/4
VOLTAGE / FREQUENCY	V/Hz	230/50
NOMINAL MOTOR CURRENT	A	2,2
NOMINAL MOTOR SPEED	rpm	1395
NOMINAL MOTOR POWER	W	500
IP PROTECTION RATING OF MOTOR	-	66
NET WEIGHT	kg	46
NOISE	dB***	66

* for the parameters 90/70 °C and the inlet air temperature 0 °C

** the max. capacity for 120/90 °C, 0 °C the inlet air temperature // the min. capacity for 40/30 °C, 20 °C the inlet air temperature

*** the measurement at the distance of 5 m from the device

Air water heater series **S-3S 230V**

The S series water heater is equipped with a casing made of galvanized, powder-coated steel and a 3-speed fan that allows you to regulate the efficiency of the device. The technology used in the heater allows you to control the heating power, thus increasing the functionality and improving the overall parameters of the device. A wide range of heaters of the S series allows you to adjust the heating power of the device so that its operation fully satisfies the thermal comfort of people in rooms with large and medium cubic capacity. The installation console dedicated to the water heater gives a wide range of installation options and precise direction of the air stream.



Place to use:

The HC-3S series water heater will successfully provide thermal comfort in such places as:

- halls,
- warehouses
- production halls,
- car repair shops,
- logistics centers,
- commercial pavilions.

	UNIT	S1-3S	S2-3S	S3-3S	S4-3S
PRODUCT CODE		WHS1-3S-1789	WHS2-3S-1790	WHS3-3S-1791	WHS4-3S-1787
NOMINAL HEATING CAPACITY	kW*	14,7 13,1 11,3	23,4 16,0 14,0	36,9 20,8 17,8	50,1 38,5 27,5
HEATING CAPACITIES RANGE	kW**	1,57 – 19,5	2,1 – 30,8	2,92 – 48,8	4,17 – 66,2
MAXIMUM AIRFLOW	m ³ /h	1400 1150 900	2000 1100 900	1800 850 700	3350 2250 1400
MAXIMUM ISOTHERMAL STREAM RANGE	m	10	13	11	18
NUMBER OF ROWS	pcs.	1	2	3	2
WATER CAPACITY	dm ³	0,5	1,3	1,9	2
MAXIMUM TEMPERATURE OF HEATING FLUID	°C	120	120	120	120
MAXIMUM PRESSURE OF HEATING FLUID	MPa	1,6	1,6	1,6	1,6
CONNECTORS DIAMETER	cal	3/4	3/4	3/4	3/4
VOLTAGE / FREQUENCY	V/Hz	230/50	230/50	230/50	230/50
NOMINAL MOTOR CURRENT	A 3 stage/ 2 stage/ 1stage	0,40 0,30 0,25	0,58 0,30 0,20	0,58 0,30 0,20	0,84 0,65 0,54
NOMINAL MOTOR SPEED	rpm 3 stage/ 2 stage/ 1stage	1350 1150 900	1400 1000 680	1400 1000 680	1400 1050 750
NOMINAL MOTOR POWER	W 3 stage/ 2 stage/ 1stage	85 65 55	125 75 45	125 75 45	190 150 120
IP PROTECTION RATING OF MOTOR	-	54	54	54	54
NET WEIGHT	kg	15	21	23	27
NOISE	dB*** 3 stage/2 stage/ 1stage	51 45 43	54 48 46	53 47 45	56 50 48

* for the parameters 90/70 °C and the inlet air temperature 0 °C

** the max. capacity for 120/90 °C, 0 °C the inlet air temperature, 3rd stage // the min. capacity for 40/30 °C, 20 °C the inlet air temperature, 1st stage

*** the measurement at the distance of 5 m from the device

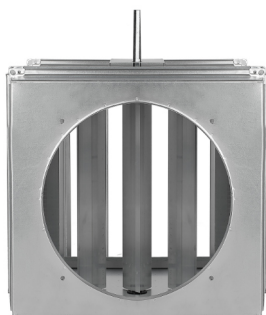
Mixing chamber series MC

The mixing chamber together with the heater and dedicated automatics form a heating and ventilation unit, which is a simple and effective solution that performs the function of mechanical and supply ventilation. Adding to this the STORM series of roof exhaust fans will create a complete, supply-exhaust mechanical ventilation system.



Device features:

- double protection of the exchanger against freezing,
- possibility of connection to the BMS system via the MODBUS communication protocol,
- many work modes differing in the degree of automation,
- cascade control,
- galvanized steel housing to protect against corrosion,
- the chamber is intended for installation together with the heaters from the series HC-3S, HC-EC and FARMER HCF.



	UNIT	MC + HC 20-3S			MC + HC 30-3S			MC + HC 35-3S			MC + HC 45-3S			MC + HC 50-3S			MC + HC 70-3S			MC + HC 80-3S		
PRODUCT CODE		MCHC2045-1782 + WHHC20-3S-1759			MCHC2045-1782 + WHHC30-3S-1760			MCHC2045-1782 + WHHC35-3S-1761			MCHC2045-1782 + WHHC45-3S-1762			MCHC5080-2016 + WHHC50-3S-2006			MCHC5070-1783 + WHHC70-3S-1764			MCHC5080-2016 + WHHC80-3S-1956		
DEVICE POWER	kW*	17,1	13,0	8,79	20,9	14,3	8,97	22,9	15	9,83	31,0	18,5	11,6	37,4	34,2	25,0	44,7	24,4	19,3	50,4	44,7	30,0
HEATING POWER RANGE	kW**	1,08 – 22,7			1,11 -27,8			1,31 – 30,4			1,85 – 41,0			3,66 - 49,3			3,08 – 59,2			4,62 - 66,7		
MAXIMUM AIR FLOW	m³/h	2100	1300	700	2050	1100	550	1700	900	500	1600	800	450	3000	2600	1600	2200	1000	750	2600	2200	1300
MAXIMUM TEMPERATURE OF THE HEATING AGENT	°C	120			120			120			120			120			120			120		
MAXIMUM WORKING PRESSURE OF THE HEATING AGENT	MPa	1,6			1,6			1,6			1,6			1,6			1,6			1,6		
DIAMETER OF CONNECTION SPLITTERS	cal	3/4			3/4			3/4			3/4			3/4			3/4			3/4		
VOLTAGE / FREQUENCY	V/Hz	230/50			230/50			230/50			230/50			230/50			230/50			230/50		
RATED CURRENT	A 3 stage/ 2 stage/ 1stage	0,84	0,65	0,54	0,84	0,65	0,54	0,84	0,65	0,54	0,84	0,65	0,54	2,20	1,70	1,50	1,08	0,86	0,70	2,20	1,70	1,50
ENGINE RPM	rpm 3 stage/ 2 stage/ 1stage	1400	1050	750	1400	1050	750	1400	1050	750	1400	1050	750	1350	1200	750	1360	1050	750	1350	1200	750
ENGINE POWER	W 3 stage/ 2 stage/ 1stage	190	150	120	190	150	120	190	150	120	190	150	120	480	350	280	240	190	160	480	350	280
IP PROTECTION RATE	-	54			54			54			54			54			54			54		
NET WEIGHT	kg	31,5			32			32,5			34			40,5			39,5			44,5		

* for the parameters 90/70 °C and the inlet air temperature 0 °C

** the max. capacity for 120/90 °C, 0 °C the inlet air temperature, 3rd stage // the min. capacity for 40/30 °C, 20 °C the inlet air temperature, 1st stage

AIR CURTAINS

DOOR AND GATE

- effective protection against heat loss,
- long range air of devices,
- durable housing.

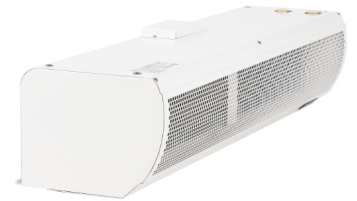
**WATER
COLD
ELECTRIC**

Air curtains are devices that are most often installed in high traffic areas where doors are often opened or closed. The air curtain is primarily responsible for the protection against heat loss (in winter) or cold loss (in summer). It can also act as a warming up. These types of devices, however, should be distinguished into door curtains operating in places such as shops, offices, hospitals, shopping malls, restaurants, hotels and door curtains, which will find their place in logistics centers, warehouses, construction stores, car workshops or hangars.

Water air curtain series

AERIS WN-1P 230V

The AERIS series air curtain is designed for installation above the entrance / exit to the room. The device is equipped with a heat exchanger that heats the air flowing through it, additionally supporting the heating system. The product is intended for installation in facilities with a central heating system to which a heat exchanger should be connected. During operation, the air curtain creates a barrier to prevent heat loss through the open door. It also protects the room against the penetration of insects and dust into its interior.



Device features:

- designed for installation above or along the door opening,
- durable powder-coated metal housing,
- mounting panel and door sensor included,
- effective protection against dust and insects from the outside,
- high operating economy of the device,
- available in sizes 100 cm, 150 cm, 200 cm,
- easy to assemble.

	UNIT	AERIS 100WN-1P			AERIS 150WN-1P			AERIS 200WN-1P		
PRODUCT CODE		AC100WN-1P			AC150WN-1P			AC200WN-1P		
NOMINAL HEATING CAPACITY	kW* 3 stage/ 2 stage/ 1stage	17,0	15,8	14,2	26,1	24,1	21,9	37,1	34,0	31,4
MAXIMUM AIRFLOW	m³/h 3 stage/ 2 stage/ 1stage	1500	1350	1150	2250	2000	1750	3250	2850	2550
MAXIMUM AIR SPEED	m/s 3 stage/ 2 stage/ 1stage	9	8	7	9	8	7	9	8	7
CURTAIN RANGE	m	3			3			3		
WATER CAPACITY	dm³/h 3 stage/ 2 stage/ 1stage	749	698	625	1150	1062	968	1638	1498	1386
MAXIMUM TEMPERATURE OF HEATING FLUID	°C	90			90			90		
MAXIMUM PRESSURE OF HEATING FLUID	MPa	1,6			1,6			1,6		
CONNECTORS DIAMETER	cal	3/4			3/4			3/4		
VOLTAGE / FREQUENCY	V/Hz	230/50			230/50			230/50		
NOMINAL MOTOR CURRENT	A 3 stage/ 2 stage/ 1stage	0,65	0,57	0,52	0,87	0,78	0,70	1,39	1,30	1,22
NOMINAL MOTOR POWER	W 3 stage/ 2 stage/ 1stage	150	130	120	200	180	160	320	300	280
IP PROTECTION RATING OF MOTOR	-	E / IP20			E / IP20			E / IP20		
NET WEIGHT	kg	18			28			34		
NOISE	dB 3 stage/ 2 stage/ 1stage	57	55	52	59	57	54	61	59	56

* for the parameters 90/70 °C and the inlet air temperature 0 °C

Air curtain cold series

AERIS C-1P 230V

The air curtain is a solution dedicated to all public utility and recreation facilities. This device perfectly protects against decent temperature losses resulting from the alternate opening and closing of the door. Most often, this device is installed in the places of entry / exit from the building in order to maintain a constant temperature inside the building and to protect it against external dust and insects. In order to ensure a comfortable temperature for customers, the door curtain is installed in restaurants, gyms, as well as hairdressing salons and hotels.



★ Device features:

- high operating economy of the device,
- effective protection against dust and insects from the outside,
- solid plastic housing,
- remote controller, mounting panel and door sensor included,
- easy to assemble,
- contemporary design.

	UNIT	AERIS 100C-1P		AERIS 150C-1P		AERIS 200C-1P	
PRODUCT CODE		AC100C1P		AC150C1P		AC200C1P	
MAXIMUM AIRFLOW	m ³ /h 2 stage/ 1 stage	1770	1450	3150	2550	3540	2900
MAXIMUM AIR SPEED	m/s 2 stage/ 1 stage	11	9	11	9	11	9
CURTAIN RANGE	m	3		3		3	
VOLTAGE / FREQUENCY	V/Hz	230/50		230/50		230/50	
NOMINAL MOTOR CURRENT	W 2 stage/ 1 stage	180	130	230	180	360	260
NOMINAL MOTOR POWER	A 2 stage/ 1 stage	0,78	0,57	1,00	0,78	1,57	1,13
IP PROTECTION RATING OF MOTOR	-	E / IP 20		E / IP 20		E / IP 20	
NET WEIGHT	kg	13,5		18,0		18,0	
NOISE	dB 2 stage/1 stage	56	54	57	55	57	55

Electric air curtain series

AERIS E-1P 230V

The AERIS series air curtain is a proposal dedicated to commercial facilities and public buildings, where the flow of customer traffic is very large. The device is designed to be mounted above or along the entrance door of the room. The curtain is equipped with electric heaters that heat the air flowing through it. It is therefore intended to be connected to the facility's electrical network. During operation, the air curtain creates a barrier to prevent heat loss through the open door, and protects the room against insects and dust.



Device features:

- designed for installation above or along the door opening,
- durable powder-coated metal housing,
- remote controller, mounting panel and door sensor included,
- effective protection against dust and insects from the outside,
- available in sizes 100 cm, 150 cm, 200 cm,
- easy to assemble.



	UNIT	AERIS 100E-1P			AERIS 150E-1P			AERIS 200E-1P		
PRODUCT CODE		AC100E1P			AC150E1P			AC200E1P		
HEATING POWER	kW heating stage 3/2/1	6,0	4,0	2,0	10	6,7	3,3	14	9,4	4,6
HEATER RATED CURRENT	A heating stage 3/2/1	26,1	17,4	8,7	43,5	29,1	14,3	60,9	40,9	20
MAXIMUM AIRFLOW	m ³ /h 2 stage / 1 stage	1200	1100		1900	1700		2800	2500	
MAXIMUM AIR SPEED	m/s 2 stage / 1 stage	8,5	7,5		8,5	7,5		8,5	7,5	
VOLTAGE / FREQUENCY	V/Hz	230/50			230/50			230/50		
NOMINAL MOTOR CURRENT	W 2 stage/ 1 stage	180	130		230	180		350	300	
NOMINAL MOTOR POWER	A 2 stage/ 1 stage	0,78	0,57		1	0,78		1,52	1,30	
IP PROTECTION RATING OF MOTOR	-	E / IP20			E / IP20			E / IP20		
NET WEIGHT	kg	15,5			20,5			26		
NOISE	dB 2 stage/1 stage	57	55		59	57		61	59	

Electric air curtain series

AERIS EN-1P 230V

The AERIS air curtain is a device equipped with electric heaters that heat the air flowing through it. The device protects against heat loss resulting from opening and closing the entrance door to the building. For this reason, the device is most often installed in the places of entry / exit from the building, which facilitates achieving and maintaining thermal comfort and provides protection against external dust and insects.



Device features:

- designed for installation above or along the door opening,
- durable plastic housing,
- remote controller, mounting panel and door sensor included,
- effective protection against dust and insects from the outside,
- high operating economy of the device,
- contemporary design.

	UNIT	AERIS 100EN-1P	
PRODUCT CODE		AC100EN1P	
HEATING POWER	kW heating stage3/2/1	6	4
HEATER RATED CURRENT	A	27,3	
MAXIMUM AIRFLOW	m ³ /h 2 stage/ 1 stage	1770	1450
MAXIMUM AIR SPEED	m/s 2 stage/1 stage	11	9
CURTAIN RANGE	m	3	
HEATERS VOLTAGE / FREQUENCY	V/Hz	230/50	
MOTOR VOLTAGE / FREQUENCY	V/Hz	230/50	
NOMINAL MOTOR CURRENT	A 2 stage/1 stage	1,22	0,96
NOMINAL MOTOR POWER	W 2 stage/1 stage	280	220
IP PROTECTION RATING OF MOTOR	-	E / IP 20	
NET WEIGHT	kg	16,5	
NOISE	dB 2 stage/1 stage	61	59

Electric air curtain series

AERIS EN-3P 400V

The AERIS air curtain is designed for installation above or along the entrance door. The device is equipped with electric heaters that heat the air flowing through them. The product is intended for installation in facilities with a connected three-phase installation (400 V). During operation, the air curtain creates a barrier to prevent heat loss through the opening of the door. It also protects the room against the penetration of insects and dust into its interior.



★ Device features:

- designed for installation above the door opening,
- durable plastic housing,
- remote controller, mounting panel and door sensor included (depending on the model),
- effective protection against dust and insects from the outside,
- high operating economy of the device,
- available in sizes 90 cm, 100 cm, 120 cm, 150 cm, 200 cm,
- easy to assemble,
- contemporary design.

	UNIT	AERIS 90EN-3P			AERIS 100EN-3P			AERIS 120EN-3P			AERIS 150EN-3P			AERIS 200EN-3P		
PRODUCT CODE		AC90EN3P			AC100EN3P			AC120EN3P			AC150EN3P			AC200EN3P		
HEATING POWER	kW heating stage 3/2/1	8			8 5,5 2,5			10			12			16 10 5		
HEATER RATED CURRENT	A	11,5			12,1			14,5			18,2			24,2		
MAXIMUM AIRFLOW	m ³ /h 2 stage/1 stage	1600	1450	1300	-	1770	1450	2400	2150	1950	3150	2850	2550	-	3540	2900
MAXIMUM AIR SPEED	m/s 2 stage/1 stage	11	10	9	-	11	9	11	10	9	11	10	9	-	11	9
CURTAIN RANGE	m	3			3			3			3			3		
HEATERS VOLTAGE / FREQUENCY	V/Hz	400/50			400/50			400/50			400/50			400/50		
MOTOR VOLTAGE / FREQUENCY	V/Hz	230/50			230/50			230/50			230/50			230/50		
NOMINAL MOTOR CURRENT	A 2 stage/1 stage	260	230	200	-	280	220	380	355	330	490	445	400	-	560	440
NOMINAL MOTOR POWER	W 2 stage/1 stage	1,13	1,00	0,87	-	1,22	0,96	1,65	1,54	0,43	2,13	1,93	1,74	-	2,43	1,91
IP PROTECTION RATING OF MOTOR	-	E / IP 20			E / IP 20			E / IP 20			E / IP 20			E / IP 20		
NET WEIGHT	kg	15,5			16,5			19			22,5			31,0		
NOISE	dB 2 stage/1 stage	61	60	59	-	61	59	62	61	60	63	62	61	-	65	63

Gate curtain series

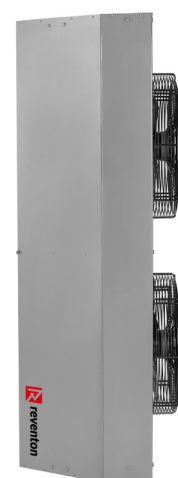
HUMMER 230V

The HUMMER door air curtain is available in two variants. The water air curtain has a 1-row heat exchanger which heats the air flowing through it. The cold air curtain, on the other hand, blows air at the temperature of the room. Both curtains are perfect for loading and unloading transports, creating a kind of air barrier when the entrance gate is opened. The main function of the gate curtain is to protect the object against the escape / inflow of air of undesirable temperature.



Device features:

- designed for installation above or along the door opening,
- durable powder-coated metal housing,
- mounting hardware included,
- effective protection against dust and insects from the outside,
- high operating economy of the device,
- available in sizes 150 cm, 200 cm,
- easy assembly of the device,
- modular structure,
- modern industrial design used.



	UNIT	HUMMER 150C-1P	HUMMER 200C-1P	HUMMER 150W-1P	HUMMER 200W-1P
PRODUCT CODE		ACH150C-1999	ACH200C-2000	ACH150W-2001	ACH200W-2002
NOMINAL HEATING CAPACITY	kW*	-	-	27,9	34,0
MAXIMUM AIRFLOW	m³/h	7200	10500	6500	8500
CURTAIN RANGE	m	6,5	7,0	6,5	7,0
MAXIMUM TEMPERATURE OF HEATING FLUID	°C	-	-	120	120
MAXIMUM PRESSURE OF HEATING FLUID	MPa	-	-	1,6	1,6
CONNECTORS DIAMETER	cal	-	-	3/4	3/4
VOLTAGE / FREQUENCY	V/Hz	230/50	230/50	230/50	230/50
NOMINAL MOTOR CURRENT	A	2 x 1,08	3 x 1,08	2 x 1,08	3 x 1,08
NOMINAL MOTOR POWER	W	2 x 240	3 x 240	2 x 240	3 x 240
IP PROTECTION RATING OF MOTOR	-	54	54	54	54
NET WEIGHT	kg	40	57	51	70
NOISE	dB	67	70	66	69

* for the parameters 90/70 °C and the inlet air temperature 0 °C

DESTRATIFICATORS

- it effectively removes warm air from the upper parts of the room,
- it favors operating savings during the heating season,
- intended for objects over 4m in height.

Destratificator is a device whose task is to transfer warm air in the upper parts of the room. In this way, warm air is directed through the destratificator into the zone where people stay, thus satisfying the need for thermal comfort. It is used to save operating costs on heating, including limiting heat loss through the roof. The destratificator equalizes the air temperature between the upper and lower part of the rooms in which it is located. It is most often used in rooms with a height of more than 4 meters.

Destratificator series **HC-3S 230V AC**

Destratificator, otherwise known as an air mixer, is a device that throws warm air from the upper parts of the room into the zone where people stay. In this way, the heated air is directed efficiently downwards. The destratificator is intended for use in industrial rooms with a height of min. 4 m, such as e.g. warehouses, production halls or shipping centers. Due to their construction specificity, these facilities are, by definition, exposed to special limitations in heat distribution.

★ **Device features:**

- 3-speed fan,
- environmentally friendly and durable housing EPP,
- modern design,
- automation dedicated to the device,
- easy to assemble.



	UNIT	DESTRATYFIKATOR HC-3S		
PRODUCT CODE		DHC-3S-1766		
MAXIMUM AIRFLOW	m ³ /h 3 stage/ 2 stage/ 1stage	4600	3900	3100
MAXIMUM VERTICAL AIR RANGE	m 3 stage/ 2 stage/ 1stage	10	8	6
VOLTAGE / FREQUENCY	V/Hz	230/50		
NOMINAL MOTOR CURRENT	A 3 stage/ 2 stage/ 1stage	1,08	0,86	0,70
NOMINAL MOTOR SPEED	rpm 3 stage/ 2 stage/ 1stage	1360	1050	750
NOMINAL MOTOR POWER	W 3 stage/ 2 stage/ 1stage	240	190	160
IP PROTECTION RATING OF MOTOR	-	54		
NET WEIGHT	kg	11,5		
NOISE*	dB 3 stage/ 2 stage/ 1stage	61	56	52



* the measurement at the distance of 5 m from the device

Destratificator series

TORNADO 230V

The TORNADO series destratificator is a device designed especially for high rooms. The destratificator throws air into the zone where people stay, which previously moved to the upper parts of the building due to heating. This way of using the device allows for effective use of the supplied heat, and also provides thermal comfort to people staying in the building.



Device features:

- efficient energy-saving fan,
- large range of the device,
- easy to assemble,
- modern design,
- a wide range of devices with various air flow rates.



	UNIT	TORNADO XS1	TORNADO XS2	TORNADO XS3	TORNADO XS4	TORNADO XS5	TORNADO XS6
PRODUCT CODE		DT-XS1-1965	DT-XS2-1966	DT-XS3-1967	DT-XS4-1968	DT-XS5-1969	DT-XS6-1970
MAXIMUM AIRFLOW	m ³ /h 3 stage/ 2 stage/ 1stage	2200	3600	4500	5400	6700	10200
MAXIMUM VERTICAL AIR RANGE	m 3 stage/ 2 stage/ 1stage	6	8	9	11	12	15
VOLTAGE / FREQUENCY	V/Hz	230/50	230/50	230/50	230/50	230/50	230/50
NOMINAL MOTOR CURRENT	A 3 stage/ 2 stage/ 1stage	0,65	0,82	1,15	1,35	1,75	2,90
NOMINAL MOTOR SPEED	rpm 3 stage/ 2 stage/ 1stage	1420	1380	1350	1380	1380	1300
NOMINAL MOTOR POWER	W 3 stage/ 2 stage/ 1stage	126	180	250	295	385	660
IP PROTECTION RATING OF MOTOR	-	44	44	44	44	44	44
NET WEIGHT	kg	7,1	8,3	10,6	13,6	16,8	23,0
NOISE*	dB 3 stage/ 2 stage/ 1stage	52	55	57	58	59	62

* the measurement at the distance of 5 m from the device

INDUSTRIAL FANS

- wide range of available models of devices,
- a wide range of possible applications of the presented fans,
- quiet and reliable operation of devices.



AXIAL FANS DUCT FANS ROOF FANS

Each of the types of fans we offer complements our offer in the field of heating and ventilation systems. Industrial fans are mainly responsible for air transport and its circulation. According to their intended use, they convey air from the building to the outside or suck fresh air inside. Roof fans are part of the exhaust system and are used to remove used, oxygen-free air from the building.

Axial fan with a protective mesh series

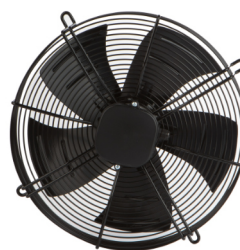
FR-BG / FR-SG 230V/400V

blowing FR-BG



	UNIT	FR-250-BG	FR-300-BG	FR-350-BG	FR-400-BG	FR-450-BG	FR-500-BG	FR-550-BG	FR-630-BG	FR-710-BG	FR-800-BG
PRODUCT CODE		IAFR250BG-1701	IAFR300BG-1702	IAFR350BG-1703	IAFR400BG-1704	IAFR450BG-1705	IAFR500BG-1706	IAFR550BG-1707	IAFR630BG-1708	IAFR710BG-1709	IAFR800BG-1710
MAXIMUM AIRFLOW	m³/h	1450	1750	2350	3800	5400	6050	7500	11400	Δ 15000 Υ 13000	Δ 20000 Υ 17500
VOLTAGE / FREQUENCY	V/Hz	230/50	230/50	230/50	230/50	230/50	230/50	230/50	230/50	400/50	400/50
NOMINAL MOTOR CURRENT	A	0,42	0,38	0,58	0,84	1,08	1,35	1,75	2,9	Δ 1,9 Υ 1,15	Δ 2,85 Υ 1,65
NOMINAL MOTOR SPEED	rpm	2400	1350	1400	1400	1360	1380	1380	1300	Δ 900 Υ 730	Δ 920 Υ 770
NOMINAL MOTOR POWER	W	90	75	124	190	240	295	385	660	Δ 900 Υ 650	Δ 1200 Υ 930
IP PROTECTION RATING OF MOTOR	-	44	44	44	44	44	44	44	44	44	44
INSULATION CLASS	-	F	F	F	F	F	F	F	F	F	F
WEIGHT	kg	2,5	3	5	6	8	9	11	15	30	35
NOISE	dB	60	62	64	67	69	70	71	74	Δ 73 Υ 72	Δ 75 Υ 74

sucking FR-SG



	UNIT	FR-250-SG	FR-300-SG	FR-350-SG	FR-400-SG	FR-450-SG	FR-500-SG	FR-550-SG	FR-630-SG	FR-710-SG	FR-800-SG
PRODUCT CODE		IAFR250SG-1711	IAFR300SG-1712	IAFR350SG-1713	IAFR400SG-1714	IAFR450SG-1715	IAFR500SG-1716	IAFR550SG-1717	IAFR630SG-1718	IAFR710SG-1719	IAFR800SG-1720
MAXIMUM AIRFLOW	m³/h	1450	1850	2450	3950	5000	6050	7500	11400	Δ 15000 Υ 13000	Δ 20000 Υ 17500
VOLTAGE / FREQUENCY	V/Hz	230/50	230/50	230/50	230/50	230/50	230/50	230/50	230/50	400/50	400/50
NOMINAL MOTOR CURRENT	A	0,42	0,42	0,65	0,82	1,15	1,35	1,75	2,9	Δ 1,9 Υ 1,15	Δ 2,85 Υ 1,65
NOMINAL MOTOR SPEED	rpm	2400	1380	1420	1380	1350	1380	1380	1300	Δ 900 Υ 730	Δ 920 Υ 770
NOMINAL MOTOR POWER	W	90	85	126	180	250	295	385	660	Δ 900 Υ 650	Δ 1200 Υ 930
IP PROTECTION RATING OF MOTOR	-	44	44	44	44	44	44	44	44	44	44
INSULATION CLASS	-	F	F	F	F	F	F	F	F	F	F
WEIGHT	kg	2,5	3	5	6	8	9	11	15	30	35
NOISE	dB	60	60	64	67	69	70	71	74	Δ 73 Υ 72	Δ 75 Υ 74

Axial fan in a square housing series

FR-BS 230V/400V

The axial fan of the FR-BS series is designed for wall mounting. For this purpose, it is equipped with a square frame with space for mounting screws. The device is made of powder coated steel with attention to every detail. Properly profiled blades ensure high efficiency of the fan exhaust.



Device features:

- adapted for wall mounting,
- 1 or 3 phase devices,
- square, powder-coated sheet metal housing,
- adapted to voltage regulation,
- metal blades,
- easy to assemble.



	UNIT	FR-200-BS	FR-250-BS	FR-300-BS	FR-350-BS	FR-400-BS	FR-450-BS	FR-500-BS	FR-550-BS	FR-630-BS	FR-710-BS	FR-800-BS
PRODUCT CODE		IAFR200BS-1721	IAFR250BS-1722	IAFR300BS-1723	IAFR350BS-1724	IAFR400BS-1725	IAFR450BS-1726	IAFR500BS-1727	IAFR550BS-1728	IAFR630BS-1729	IAFR710BS-1730	IAFR800BS-1731
MAXIMUM AIRFLOW	m ³ /h	780	1450	1550	2450	3950	5000	6050	7500	11400	Δ 15000 Y 13000	Δ 20000 Y 17500
VOLTAGE / FREQUENCY	V/Hz	230/50	230/50	230/50	230/50	230/50	230/50	230/50	230/50	230/50	400/50	400/50
NOMINAL MOTOR CURRENT	A	0,25	0,42	0,40	0,65	0,82	1,15	1,35	1,75	2,9	Δ 1,9 Y 1,15	Δ 2,85 Y 1,65
NOMINAL MOTOR SPEED	rpm	2500	2400	1400	1420	1380	1350	1380	1380	1300	Δ 900 Y 730	Δ 920 Y 770
NOMINAL MOTOR POWER	W	55	90	75	126	180	250	295	385	660	Δ 900 Y 650	Δ 1200 Y 930
IP PROTECTION RATING OF MOTOR	-	44	44	44	44	44	44	44	44	44	44	44
INSULATION CLASS	-	F	F	F	F	F	F	F	F	F	F	F
WEIGHT	kg	2	3,5	4	6	7	9	10	13	24	40	40
NOISE	dB	52	60	60	64	67	69	70	71	74	Δ 73 Y 72	Δ 75 Y 74

Axial fan in a round housing series

FR-BC 230V

The axial fan of the FR-BC series is designed for wall mounting, but can also be built into a straight duct. Its primary function is to remove air from the rooms. The device will work in large-volume facilities with a room height of more than 4m.

★ Device features:

- 1-phase devices,
- round housing made of powder coated sheet,
- metal blades,
- adapted to voltage regulation,
- easy to assemble.



	UNIT	FR-200-BC	FR-250-BC	FR-300-BC	FR-350-BC	FR-400-BC	FR-450-BC	FR-500-BC	FR-550-BC	FR-630-BC
PRODUCT CODE		IAFR200BC-1732	IAFR250BC-1733	IAFR300BC-1734	IAFR350BC-1735	IAFR400BC-1736	IAFR450BC-1737	IAFR500BC-1738	IAFR550BC-1739	IAFR630BC-1740
MAXIMUM AIRFLOW	m ³ /h	780	1220	1550	2450	3950	5000	6050	7500	11400
VOLTAGE / FREQUENCY	V/Hz	230/50	230/50	230/50	230/50	230/50	230/50	230/50	230/50	230/50
NOMINAL MOTOR CURRENT	A	0,25	0,35	0,40	0,65	0,82	1,15	1,35	1,75	2,9
NOMINAL MOTOR SPEED	rpm	2500	2650	1380	1420	1380	1350	1380	1380	1300
NOMINAL MOTOR POWER	W	55	80	75	126	180	250	295	385	660
IP PROTECTION RATING OF MOTOR	-	44	44	44	44	44	44	44	44	44
INSULATION CLASS	-	F	F	F	F	F	F	F	F	F
WEIGHT	kg	2	3,5	5	6	7	9	11	12	17
NOISE	dB	52	60	60	64	67	69	70	71	74

Duct fan series **FR-DF 230V**

The duct fan is designed for installation in a ventilation duct as part of the facility's ventilation system. The housing of the device is made of steel sheet, which significantly increases its durability. The fan is designed for forcing air with a low dust level.



Device features:

- designed for duct mounting,
- durable powder-coated metal housing,
- 1-phase device,
- adapted to voltage regulation,
- easy to assemble.



	UNIT	FR-100-DF	FR-125-DF	FR-150-DF	FR-160-DF	FR-200-DF	FR-250-DF	FR-315-DF
PRODUCT CODE		IDFR100DF-1741	IDFR125DF-1742	IDFR150DF-1743	IDFR160DF-1744	IDFR200DF-1745	IDFR250DF-1746	IDFR315DF-1747
MAXIMUM AIRFLOW	m ³ /h	230	350	610	770	845	950	1520
VOLTAGE / FREQUENCY	V/Hz	230/50	230/50	230/50	230/50	230/50	230/50	230/50
NOMINAL MOTOR CURRENT	A	0,31	0,34	0,47	0,79	0,73	0,67	1,1
NOMINAL MOTOR SPEED	rpm	2650	2600	2550	2580	2630	2600	2530
NOMINAL MOTOR POWER	W	72	78	108	170	157	140	248
IP PROTECTION RATING OF MOTOR	-	54	54	54	54	54	54	54
INSULATION CLASS	-	B	B	B	B	B	B	B
WEIGHT	kg	3,9	4	5,2	5,2	5,8	6	7,4
NOISE	dB	45	46	48	50	50	50	50

Roof fan series **STORM 230V**

The STORM series roof fan is used to remove used air from a room with dust content not exceeding 0.3 g/m^3 . It is intended for external use on the roofs of buildings. Thanks to the specially designed blades of the fan impeller, the air is drawn in from the axial direction and expelled radially outside the building. Our offer includes roof fans with AC and EC motors. The device has a casing made of powder-coated galvanized steel, thanks to which it is resistant to unfavorable external conditions.

★ **Device features:**

- fans with AC or EC motors,
- rotors made of steel or aluminum, depending on the model,
- high fan efficiency,
- can be the end of the exhaust ventilation system,
- suitable for roof mounting.



	UNIT	STORM 190 AC	STORM 250 AC	STORM 315 AC	STORM 400 AC	STORM 225 EC	STORM 315 EC	STORM 355 EC
PRODUCT CODE		STORM190AC-2017	STORM250AC-1981	STORM315AC-1982	STORM400AC-2018	STORM225EC-1983	STORM315EC-1984	STORM355EC-2019
MAXIMUM AIRFLOW	m ³ /h	520	1370	1900	3100	950	2250	3600
VOLTAGE / FREQUENCY	V/Hz	230/50	230/50	230/50	230/50	230/50-60	230/50-60	230/50-60
NOMINAL MOTOR CURRENT	A	0,25	0,68	0,60	1,15	0,70	1,07	2,8
NOMINAL MOTOR SPEED	rpm	2340	2380	1400	1340	2200	1850	1950
NOMINAL MOTOR POWER	W	56,5	150	135	252	82	160	345
IP PROTECTION RATING OF MOTOR	-	44	44	44	44	44	44	44
OPERATING TEMPERATURE	°C	-25 - 60	-25 - 60	-25 - 60	-25 - 60	-25 - 60	-25 - 60	-25 - 60
WEIGHT	kg	7,0	8,5	11,5	15,0	8,0	11,5	14,0
NOISE	dB	55	54	52	56	59	53	64

CONTROLLERS & ACCESORIES

- dedicated to Reventon devices,
- allows you to create individual solutions according to your needs,
 - the use of automation increases the economy of devices,
 - allows you to control the operation of devices in a wide range.

Our offer includes dedicated automation for each series of devices. Thanks to their implementation, device control becomes not only effective in the context of conscious system operation management, but above all convenient and simple.

The offered accessories, depending on the type, complete the devices, enabling the creation of a complete system or simply guarantee proper and safe assembly. Each of the accessories has a well-thought-out structure, and the materials used for their production are of the highest quality.

Controllers for **devices** **reventon**

AIR WATER HEATERS



AIR WATER HEATERS	HC3S REGULATOR	HMI	HC REGULATOR	MANUAL THERMOSTAT HC	HC3P REGULATOR	HMI EC	POTENTIOMETER EC	HMI SINGLE
HC-3S	✓	✓	✓	✓				
S-3S	✓	✓	✓	✓				
HC3P				✓	✓			
HC-EC				✓		✓	✓	
FARMER HCF IP54-3S	✓	✓	✓	✓				
FARMER HCF IP66			✓	✓				✓
FARMER OPENAIR			✓	✓				✓

INDUSTRIAL FANS



INDUSTRIAL FANS	HC REGULATOR	MANUAL THERMOSTAT HC	HMI EC	POTENTIOMETER EC	HMI SINGLE
FR-BG 230V	✓	✓			✓
FR-SG 230V	✓	✓			✓
FR-BS 230V	✓	✓			✓
FR-BC	✓	✓			✓
FR-DF	✓	✓			✓
STORM AC	✓	✓			✓
STORM EC			✓	✓	

AIR CURTAINS



AIR CURTAINS	HC3S REGULATOR	HMI CURTAIN	REMOTE	DOOR SENSOR
AERIS WN-1P	✓	✓		INCLUDED
AERIS E-1P			✓	INCLUDED
AERIS EN-1P			✓	INCLUDED
AERIS EN-3P (old) (dot. 90, 100, 150)	✓	✓		INCLUDED
AERIS EN-3P (new) (dot. 100 i 200)			✓	INCLUDED
AERIS C-1P			✓	INCLUDED
HUMMER W-1P	✓	✓		✓
HUMMER C-1P	✓	✓		✓

DESTRATIFICATORS



DESTRATIFICATORS	HC3S REGULATOR	HMI	HC REGULATOR	MANUAL THERMOSTAT HC	HMI SINGLE
HC-3S	✓	✓	✓	✓	✓
TORNADO			✓	✓	✓

Accessories for **all series devices.**



The full range of accessories for our devices can be found on our website.

www.reventongroup.eu



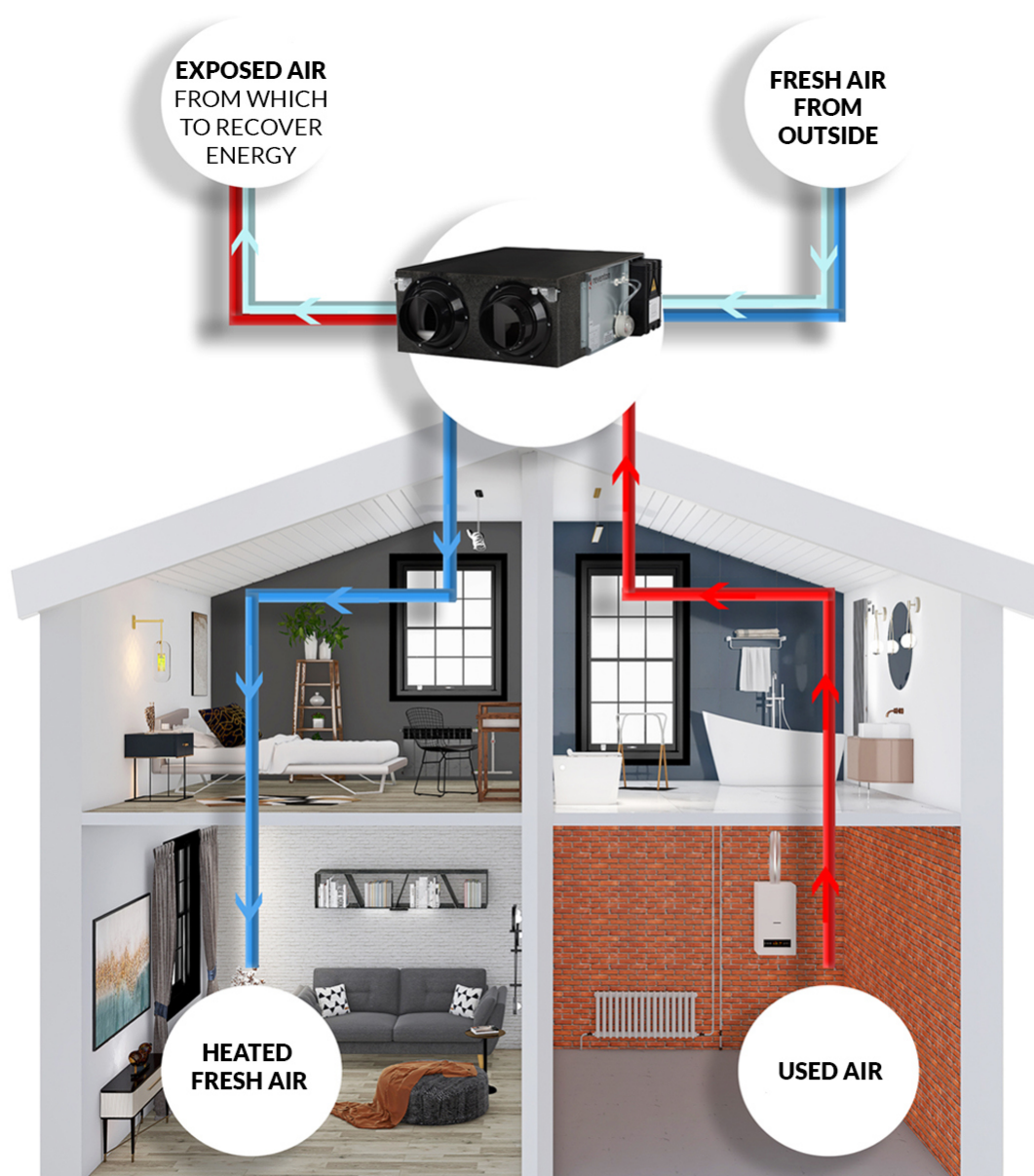
HOME APPLIANCES

How heat recovery works?

The principle of operation of the device is very simple - in the enthalpy exchanger there is an exchange of heat and moisture between the streams supplied and exhausted from the room. The streams, however, do not mix directly - heat penetrates through the walls and moisture infiltrates through special pores in the material of the exchanger. This is what is known as recuperation with moisture recovery. The air flow through the exchanger is ensured by the fans used in the device - one draws in air from the outside and blows it into the room, and the other draws air from the room and removes it outside. The recuperator often has filters that trap contaminants in the flowing air.

Why ventilation is essential?

In order to understand the essence of a recuperator's work, you need to think about how much dust and other particles are floating in the air. We try to protect our children, especially those at risk of allergies. However, we forget that even the most sterile conditions at home cannot replace clean air. This problem especially affects us during the heating season when, for fear of losing heat, we forget to ventilate the rooms. Then the air becomes heavy and breathing becomes difficult. The lack of air circulation promotes headaches and causes a number of other effects that can make life difficult.



The most common effects of dry and stagnant air are:

- **Headaches** - are the result of hypoxia in the body resulting from both poor air humidity and insufficient oxygen content.
- **Dry skin** - people with sensitive skin are particularly vulnerable, but also people with internally normalized skin water balance may be accompanied by the phenomenon of chapped lips, excessively oily hair or flaky skin.
- **Drying out of the mucosa** - the mucosa is a natural protection against viruses and bacteria. Its permanent desiccation reduces our immunity, making it susceptible to diseases. Often, drying of the mucosa is accompanied by a scratching sensation in the throat, as well as itching and watery eyes.
- **Problems with sleep** - sleep is the time of regeneration of the body, but in unfavorable conditions our body gives us hints that it is not rested. At first, you may experience a feeling of dry mouth or dark circles under your eyes when you wake up. Sometimes we can also observe a choking cough while we sleep.

Comparison of models in the series **INSPIRO**



INSPIRO BASIC	INSPIRO
3-speed AC fans	EC fan with 10 preset speeds
enthalpy exchanger	enthalpy exchanger
BMS communication	BMS communication
G3 filters	G3 filters and F9 filter
filter clogging alarm (time)	filter clogging alarm (time) + pressure switch F9
weekly schedule	weekly schedule
manual bypass	automatic bypass
-	defrost mode
-	CO and / or humidity sensor control
-	direct control of the heater

Heat recovery unit series **INSPIRO BASIC**

A recuperator with an enthalpy exchanger is intended for ventilation systems as a modern element enabling the recovery of energy - heat and moisture. It is intended for ventilation of residential buildings: single- and multi-family houses. Energy recovery allows for a significant reduction in the operating costs of the building. The enthalpy exchanger located in the device is responsible for additional humidification / dehumidification of the air supplied to the room. Such a technological solution means that there is no need to install a condensate drainage system and minimizes the risk of frost. 3-speed AC fans responsible for supplying and exhausting ensure smooth exchange of used air with fresh air. The applied G3 pre-filters protect the exchanger against quick contamination. Communication and control of the device takes place via the control panel.

★ **Device features:**

- G3 pre-filters protecting the exchanger against dirt,
- enthalpy exchanger enabling heat and moisture recovery,
- 3-speed AC fans,
- intuitive BASIC control panel included,
- power schedule,
- manual „bypass”,
- filter contamination signaling.



	UNIT	INSPIRO BASIC 200	INSPIRO BASIC 300	INSPIRO BASIC 400	INSPIRO BASIC 600	INSPIRO BASIC 800	INSPIRO BASIC 1000	INSPIRO BASIC 1300
PRODUCT CODE		INSPIRO-BASIC200 -2022	INSPIRO-BASIC300 -2023	INSPIRO-BASIC400 -2024	INSPIRO-BASIC600 -2025	INSPIRO-BASIC800 -2026	INSPIRO-BASIC1000 -2028	INSPIRO-BASIC1300 -2027
NOMINAL AIRFLOW	m ³ /h	200	300	400	600	800	1000	1300
MAXIMUM ENTALPIC EFFICIENCY	%	63	65	65	67	63	64	62
MAXIMUM TEMPERATURE EFFICIENCY	%	75	73	74	76	74	76	76
VOLTAGE FREQUENCY	V / Hz	220-240 / 50	220-240 / 50	220-240 / 50	220-240 / 50	220-240 / 50	220-240 / 50	220-240 / 50
NOMINAL MOTOR POWER	W	105	117	150	200	355	440	710
IP PROTECTION RATING OF MOTOR	-	X2	X2	X2	X2	X2	X2	X2
NET WEIGHT	kg	23	25	31	36	60	70	79
NOISE	dB(A)	31,5	34,5	37,5	39	41	42	43
ENERGY EFFICIENCY CLASS*	-	A	A	A	A	A	A	A

* according to EU No. 1254/2014

Heat recovery unit series **INSPIRO**

INSPIRO recuperator series is equipped with an enthalpy exchanger, which means that there is no need to install a condensate drainage system and minimizes the risk of frosting, and is also responsible for additional humidification / dehumidification of the air supplied to the room. A recuperator is a modern element that allows the recovery of energy - heat and moisture. EC fans with 10 predefined speeds used in the device allow for supplying and exhausting the required amount of air. G3 pre-filters protect the exchanger against quick contamination, and the F9 fine air supply filter guarantees the cleanliness of the supplied air. Communication and control of the device takes place via the STANDARD or PREMIUM control panel, depending on the customer's preferences.

★ **Device features:**

- steel casing covered with insulation,
- G3 pre-filters protecting the exchanger against dirt,
- equipped with a fine F9 supply filter,
- enthalpy exchanger enabling heat and moisture recovery,
- 10-speed EC fans,
- intuitive STANDARD controller included,
- power schedule,
- automatic „bypass”,
- differential pressure switch informing about dirt filter F9,



	UNIT	INSPIRO 150	INSPIRO 250	INSPIRO 350	INSPIRO 500	INSPIRO 650	INSPIRO 800	INSPIRO 1000	INSPIRO 1300
PRODUCT CODE		INSPIRO150-1972	INSPIRO250-1973	INSPIRO350-1974	INSPIRO500-1975	INSPIRO650-1976	INSPIRO800-1977	INSPIRO1000-2026	INSPIRO1300-2027
NOMINAL AIRFLOW	m ³ /h	150	250	350	500	650	800	1000	1300
MAXIMUM ENTALPIC EFFICIENCY	%	70	73	73	75	71	73	72	75
MAXIMUM TEMPERATURE EFFICIENCY	%	80	81	82	84	82	82	82	82
VOLTAGE FREQUENCY	V / Hz	220-240 / 50	220-240 / 50	220-240 / 50	220-240 / 50	220-240 / 50	220-240 / 50	220-240 / 50	220-240 / 50
NOMINAL MOTOR POWER	W	38	85	107	140	160	188	312	405
IP PROTECTION RATING OF MOTOR	-	X2	X2	X2	X2	X2	X2	X2	X2
NET WEIGHT	kg	25	27	33	38	62	72	81	81
NOISE	dB(A)	31,5	34,5	37,5	39	41	42	43	43
ENERGY EFFICIENCY CLASS*	-	A	A	A	A	A	A	A	A

* according to EU No. 1254/2014

Domestic fan series VELO

The VELO series domestic fan is a device for home use. It is used to discharge the used air outside the room in which it is located. Domestic fan, as its name suggests, is used in houses and apartments, as well as in public places. Devices from the VELO series are reliable fans that are characterized by durability, as well as an interesting design that will successfully fit into any interior.



Device features:

- The device is available in versions:
S- standard version,
T- version with a timer,
H- version with a humidity sensor,
MS- version with a motion sensor.
- The VELO series domestic fan is intended for installation in houses and apartments in rooms with an supplied ventilation draft.
- The device is available in standard (white) or silver (silver) colors.



Place of application of the fan?



	UNIT	VELO 100, VELO SILVER 100	VELO 150, VELO SILVER 150
MAXIMUM AIRFLOW	m ³ /h	95	240
MAXIMUM PRESSURE	Pa	36	60
VOLTAGE / FREQUENCY	V / Hz	230/50-60	230/50-60
NOMINAL MOTOR CURRENT	A	0,072	0,138
NOMINAL MOTOR SPEED	rpm	2400	2000
NOMINAL MOTOR POWER	W	12	18
IP PROTECTION RATING OF MOTOR	-	X4	X4
NOISE	dB (A)	34	35

Domestic fan series **CODE**

The CODE series domestic fan is designed for wall mounting in rooms with a ventilation draft. The fan is responsible for removing used air from the room, thus ensuring proper circulation of air masses inside the building.

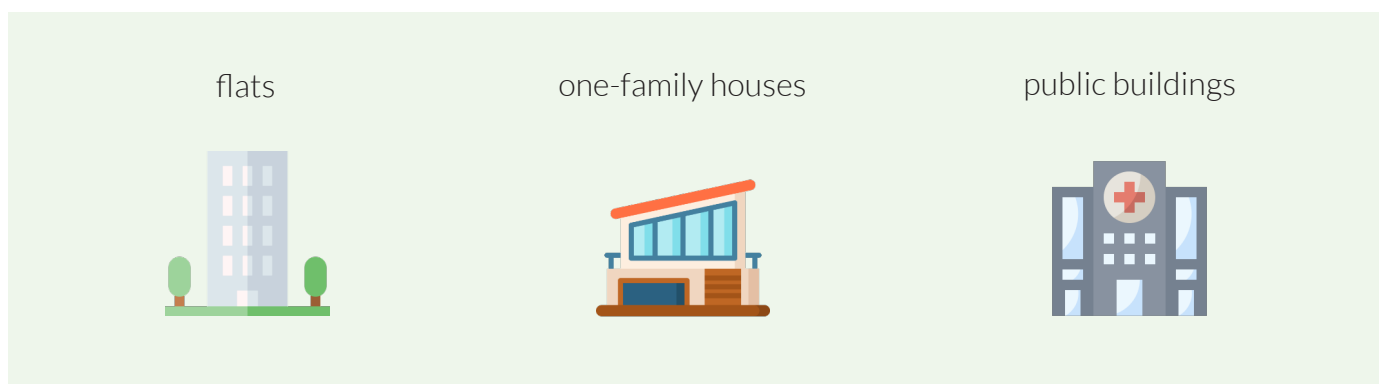


Device features:

- The device is available in versions:
S- standard version,
T- version with a timer,
PC- version with pull chain.
- efficient, energy-saving fan,
- quiet operation of the device,
- modern design.



Place of application of the fan?



	UNIT	CODE 100	CODE 150
MAXIMUM AIRFLOW	m ³ /h	130	320
MAXIMUM PRESSURE	Pa	36	60
VOLTAGE / FREQUENCY	V / Hz	230/50-60	230/50-60
NOMINAL MOTOR CURRENT	A	0,072	0,138
NOMINAL MOTOR SPEED	rpm	2400	2000
NOMINAL MOTOR POWER	W	12	18
IP PROTECTION RATING OF MOTOR	-	X2	X2
NOISE	dB (A)	34	35

Domestic fan series **REGO**

The REGO series domestic fan is designed for duct installation in a simple ventilation system. Its shape fits perfectly into the cross-section of the ventilation duct, and the efficient fan efficiently moves the air in the desired direction. This proves that it can be installed for air supply or suction. The device is intended for use in apartments, single-family houses, hotels or other commercial buildings.



Device features:

- can be installed as a forced air or suction device,
- quiet operation of the device,
- energy-saving fan,
- ABS plastic housing.



Place of application of the fan?

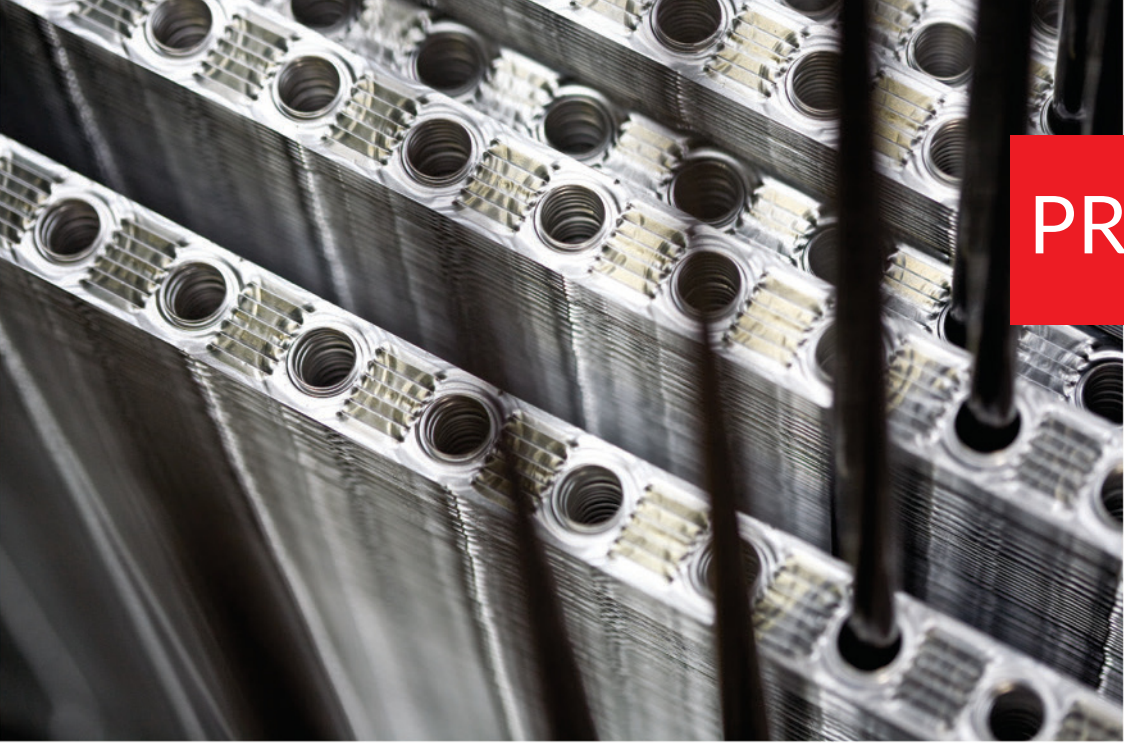
flats



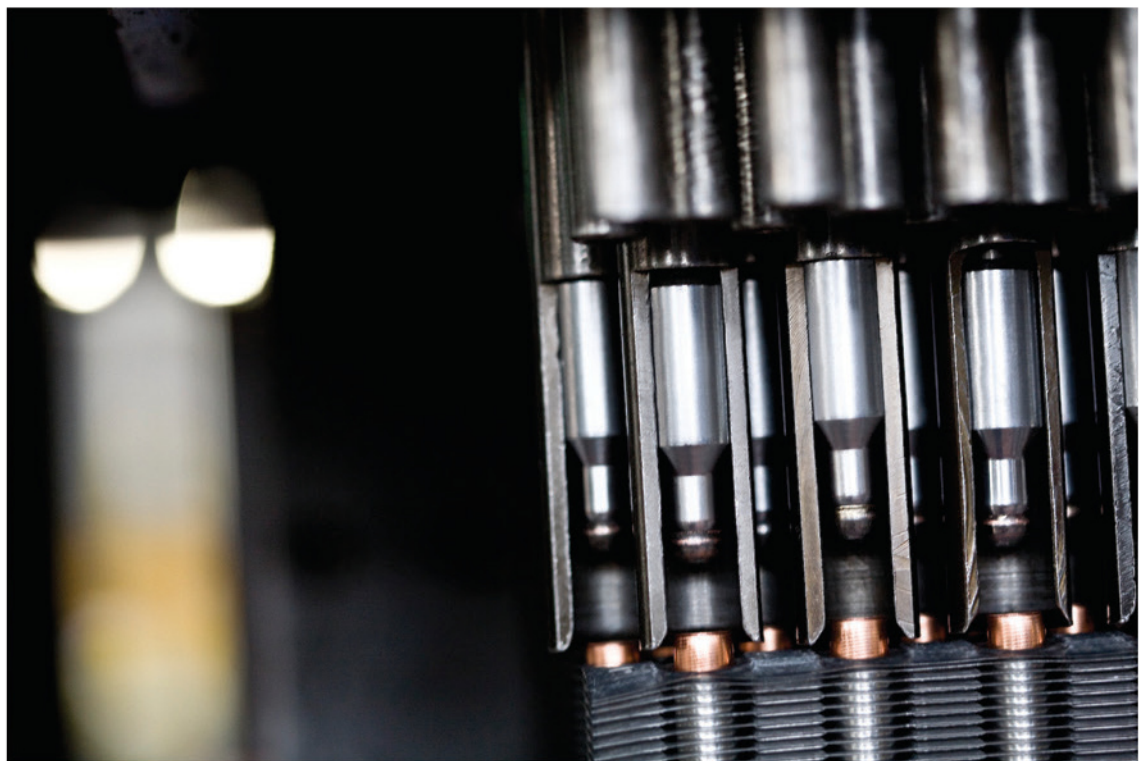
one-family houses



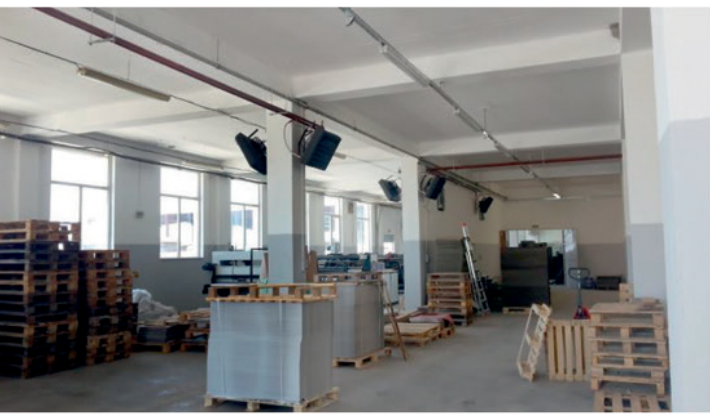
	UNIT	REGO 150
MAXIMUM AIRFLOW	m ³ /h	320
MAXIMUM PRESSURE	Pa	60
VOLTAGE / FREQUENCY	V / Hz	230/50-60
NOMINAL MOTOR CURRENT	A	0,138
NOMINAL MOTOR SPEED	rpm	2000
NOMINAL MOTOR POWER	W	18
IP PROTECTION RATING OF MOTOR	-	X2
NOISE	dB (A)	35



PRODUCTION



REALIZATIONS







T: +48 33 482 74 96



E: biuro@reventongroup.eu



www.reventongroup.eu

